

# **nirax**<sup>®</sup>

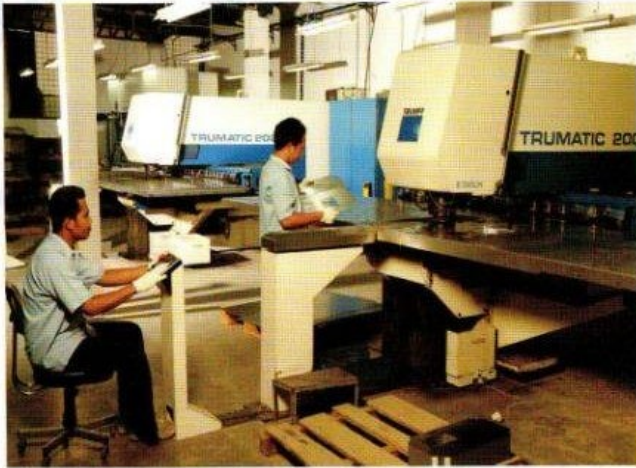
## **CABINET RACK SYSTEMS**



### **APPLICATION**

- Electronic control systems
- Computer systems
- Telecommunication systems
- Laboratory instrumentation system
- Testing instrumentation system
- Monitoring systems
- Power supply systems
- ETC

## **19" CABINET RACK SYSTEMS**

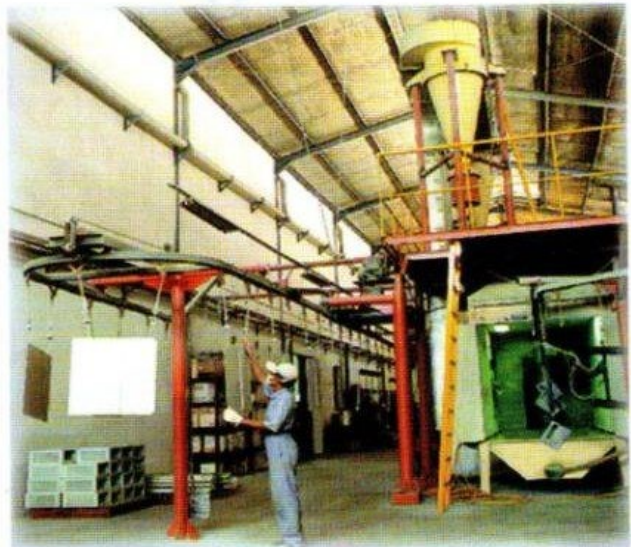


◀ "TRUMPF" CNC Punching



▶ "TRUMPF" Bending Machine

▼ Powder Coating Line ▼



## MODELS SPECIFICATION :

### 1. RACK SYSTEM

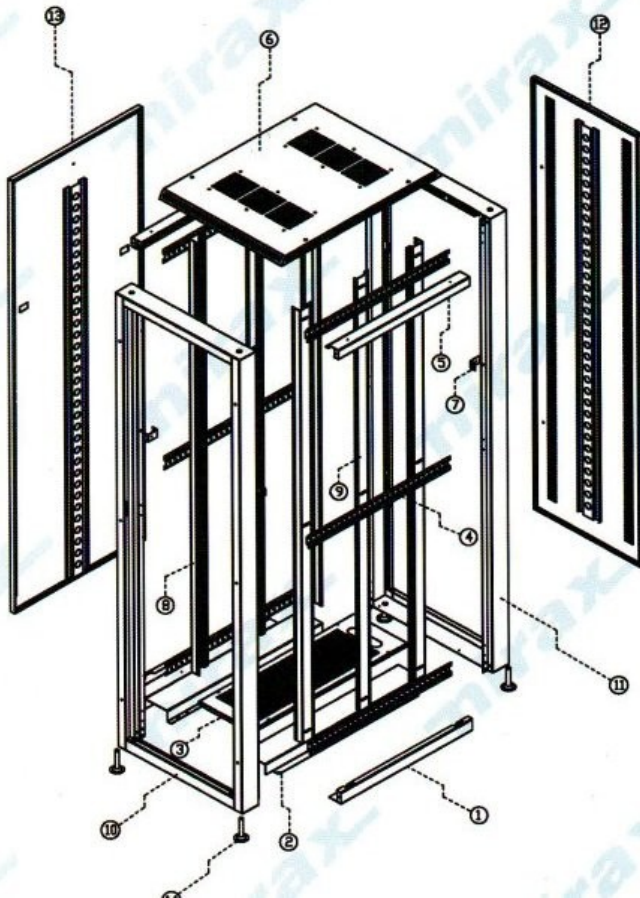
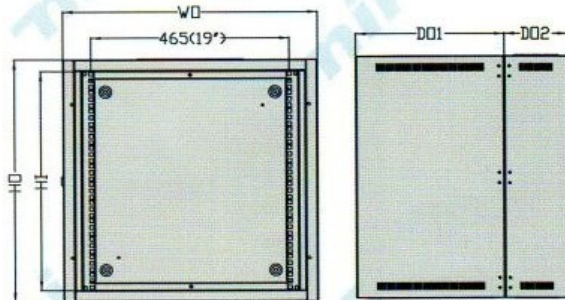
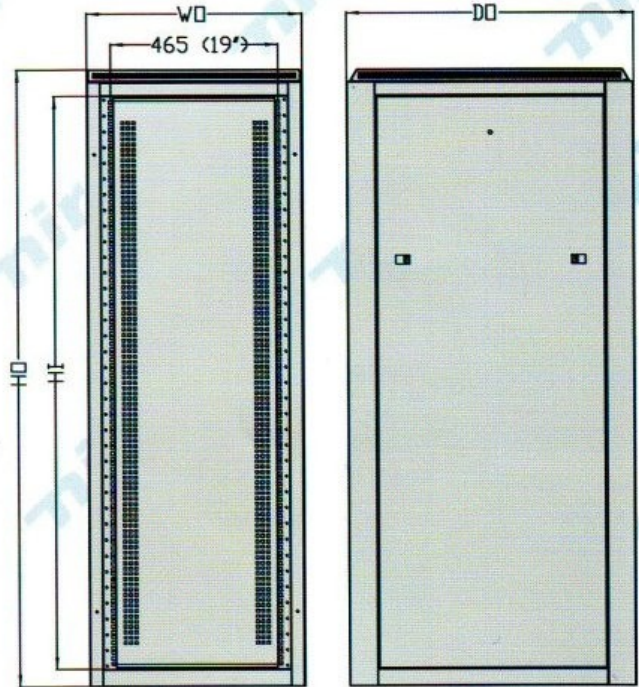
| MODEL    | HO (mm) | HI (mm) | WO (mm) | DO (mm) | UNIT |
|----------|---------|---------|---------|---------|------|
| NR 6020  | 1054    | 908     | 600     | 600     | 20 U |
| NR 6027  | 1365    | 1219    | 600     | 600     | 27 U |
| NR 6036  | 1765    | 1619    | 600     | 600     | 36 U |
| NR 8020  | 1054    | 908     | 600     | 800     | 20 U |
| NR 8027  | 1365    | 1219    | 600     | 800     | 27 U |
| NR 8036  | 1765    | 1619    | 600     | 800     | 36 U |
| NR 8042  | 2032    | 1886    | 600     | 800     | 42 U |
| NR 8045  | 2166    | 2020    | 600     | 800     | 45 U |
| NR 11042 | 2032    | 1886    | 600     | 1100    | 42 U |
| NR 11045 | 2166    | 2020    | 600     | 1100    | 45 U |

### 2. WALLMOUNT

| MODEL    | HO (mm) | HI (mm) | WO (mm) | DO1 (mm) | DO2 (mm) | UNIT |
|----------|---------|---------|---------|----------|----------|------|
| WMR 5008 | 413     | 356     | 600     | 350      | 150      | 08 U |
| WMR 5012 | 590     | 534     | 600     | 350      | 150      | 12 U |
| WMR 5015 | 722     | 666     | 600     | 350      | 150      | 15 U |
| WMR 6008 | 413     | 356     | 600     | 450      | 150      | 08 U |
| WMR 6012 | 590     | 534     | 600     | 450      | 150      | 12 U |
| WMR 6015 | 722     | 666     | 600     | 450      | 150      | 15 U |

1U = 1,75 inches = 44,45 mm

Color = \*Black \*Cream



### ITEM FOR STANDARD MODEL :

01. Bottom Frame ( 2 pcs )
02. Bottom Plate ( 2 pcs )
03. Bottom Grille ( 1 pc )
04. Horizontal Post ( 6 pcs )
05. Top Frame ( 2 pcs )
06. Roof Panel ( 1 pc )
07. Slide Latch Bracket ( 4 pcs )
08. Vertical Mounting ( 4 pcs )
09. Middle Vertical Mounting ( 2 pcs )
10. Front Frame ( 1 pc )
11. Back Frame ( 1 pc )
12. Back Door ( 1 pc )
13. Side Cover ( 2 pcs )
14. Adjustable Foot ( 4 pcs )

# ACCESSORIES (Option)



DA 20 / 27 / 36 / 42 / 45  
DOOR TEMPERED GLASS



SP 60 / 80 / 100  
SHELF PLATE



SA 60 / 80  
SUPPORT ANGLE



PS 01 / PSV 02 / PSV 03  
POWER SET



VP - 01 ~ 05  
VENTILATION PANEL



BP - 01 ~ 06  
BLANK PANEL



BF - 02 / 03  
BRACKET FAN



FV - 03  
FAN UNIT (VERTICAL)



DTFL 60 / 80  
DRAWER TABLE FLEXIBLE



DT 60 / 80 / 100  
DRAWER TABLE



SC - 01  
SCREW PLASTIC RING



CN - 01 CAGE NUT



CS - 01 / 02  
CENTILEVER SHELF



AF - 01 / 02  
ADJUSTABLE FOOT



WM - 01  
WIRE MANAGEMENT



CA - 01 CA - 02  
CASTOR



CT 42 / 45  
CABLE TRAY